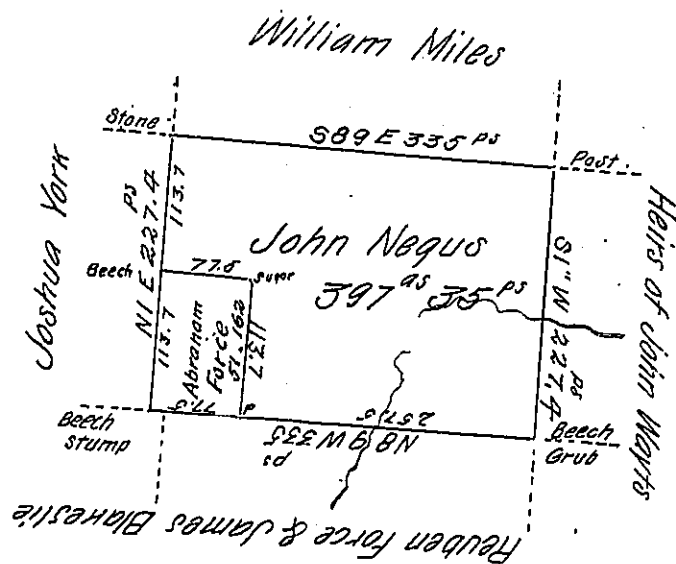


John Negus 397^{as} 35^{ps}
 Abraham Force 51 162
 449 28



In pursuance of the Settlement of John Stickle, commenced about the year 1810 was surveyed on the 20th day of October 1837 the above described tract of land Situate in Bloomfield township Crawford county containing 449 acres 28 perches and allowance of Six per cent for roads &c. The South west 51 acres 162 perches having been Surveyed for Abraham Force, and the remaining 397 acres 35 perches for John Negus as in the above plot described

John Taylor Esquire S Gen'

Eben^r Tetton D.S.

I hereby certify that it does not appear from the Books or documents in my office that the above described land has been otherwise appropriated by warrant or otherwise

Eben^r Felton D.S.

IN TESTIMONY that the above is a copy of the original remaining on file in the Department of Internal Affairs of Pennsylvania, made conformably to an Act of Assembly approved the 16th day of February, 1833, I have hereunto set my Hand and caused the Seal of said Department to be affixed at Harrisburg, this twenty third day of September 1904

Joseph P. Brannon
 Secretary of Internal Affairs.